

MAUDE'S QUAD

A CEAT LIVING LEARNING COMMUNITY

Named for the first woman to receive a degree in engineering from Oklahoma A & M University, **Maude's Quad** was created to build a community where women can feel more comfortable in CEAT classes and develop important relationships with their peers.

Beginning with an eight week seminar class, ENGR 2100, women participating in the House will enroll in classes together. Other course clustering will include math, chemistry, physics, and a special freshman composition class. Participants will not only take classes and study together, but they will also interact with faculty members to discover the many facets of CEAT.

However, it won't be all work and no play. Allen Suites has a very active student community. Social events

include intramural sports, movie nights, and other campus-wide activities. Many of the friendships started in Maude's Quad continue through college careers.

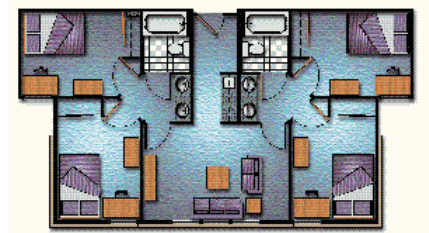
Maude's Quad is located in Allen Hall in four-bedroom, two-bathroom deluxe suites. Allen Hall is conducive to studying with tutoring, study halls, study groups and white boards set up to accommodate excellence in the classroom.

Maude's Quad has been established as a cooperative effort between the Department of Residential Life and the College of Engineering, Architecture and Technology. For more information, please contact Sharon Stead, Residence Area Coordinator for Residential Life, (405) 744-1545, sharon.stead@okstate.edu.

| **LEARNING COMMUNITY** |

The Details

- Located on the third floor of Allen Hall
- Learning community is open to women in the College of Engineering, Architecture and Technology
- A participation agreement will be required
- Single-sex by unit, co-ed by community
- Mostly 4 bed, 2 bath units, limited number of 2 bed, 2 bath shared units
- 9 month contracts
- Open visitation, with roommate veto
- No alcohol or smoking permitted
- Volleyball court located north of Zink and Allen Halls as well as the Griffith Community Center
- The Adams Market located south of Zink and Allen Halls



department of residential life
iba hall stillwater, ok 74078
P: (405) 744-5592
F: (405) 744-6775
www.reslife.okstate.edu

Starting in 2009-2010 Maude's Quad is open to returning sophomores!



According to her biography in the 1915 Redskin, Maude Spears was the first woman to take an engineering course at Oklahoma A&M University. She was studying architecture, and she was determined to rise to the top in her profession. She was the only woman member of the Senior Engineering Club.

Maude was a very skilled and spirited young woman. We celebrate her individualism and determination by naming the Women in Engineering House after her. As we continue to blaze trails in the male-dominated engineering fields, let us remember Maude, and the path that she set forth for us at Oklahoma State University.

Maude's
QUAD
women in engineering house